

Logix6.0[®] Supply Chain Optimization and Distribution Network Design



Logistix Solutions

On-Demand Solutions for Logistics Professionals

www.logistixsolutions.com
(571) 426 5951
info@logistixsolutions.com



Logix6.0[®] is a full-featured supply chain optimization and distribution network design software application that helps you quickly solve even your most complex supply chain problems.

“Logix was designed to handle complex supply chain and distribution problems that used to require ERP-class distribution network modeling tools and time-consuming set-up and customization.” Food Logistics, Intelligence for Food Warehousing, Transportation and Information Technology Executives.

Realize cost savings of 5% to 35% or more with improved customer service and lower carbon emissions.

Logistix Solutions offers a revolutionary approach with award-winning, cost effective Supply Chain Management solutions for logistics professionals. Logistix Solutions software products are all available On-Demand and can be instantly downloaded from www.logistixsolutions.com.

You only pay for what you use

Key Solutions and Features

- ◆ **Optimum number and location** of distribution facilities - *reduce transportation, inventory, and warehousing costs;*
- ◆ **Supply chain costs and customer service optimized** - *improved operating and performance metrics;*
- ◆ **Reduce supply chain disruptions / carbon emissions** - *recommended product flows and transport modes;*
- ◆ **Strategic sourcing optimization** - *total landed cost, entry ports, product pricing, inventory, lead time;*
- ◆ **Integrated fleet optimization** - *routing and scheduling, load consolidation, load splitting and cross-docking;*
- ◆ **CO² and Greenhouse Gas Emissions modeling** *measures compliance promotes Green Operations.*
- ◆ **Unique Simulation and Optimization model** *hundreds of demand, distribution network and product flow scenarios instantly.*
- ◆ **Microsoft MapPoint and Google Maps.**
- ◆ **State-of-the-Art Optimization** quick and accurate solutions to simple or complex problems
- ◆ **Distance and transit time** *automatically calculated or table-driven (e.g., PC-Miler).*
- ◆ **Greenfield and Proximity mode optimization.**
- ◆ **Fast Excel data import.**
- ◆ **User interface designed for ease-of-use** *includes reports, maps, charts and more.*
- ◆ **Quick and easy implementation.**
- ◆ **Training and consulting services** *on-line or on-site.*

Supply Chain Planning, Analysis and Optimization Solutions Instantly Available

Logistix Solutions offers award-winning, on-demand Supply Chain Planning and Execution applications at a revolutionary value for rapid ROI and benefit realization.

All our software products are available On-Demand or by traditional Enterprise License and can be instantly downloaded from www.logistixsolutions.com.

Small and medium sized companies can access the same tools as those used by the Fortune 500 with an immediate and significant return on investment. Risks are eliminated and start-up requirements are minimal.

- You realize savings from day one. No up-front fees or implementation costs.
- Full-featured applications to solve even your most complex supply chain problems.
- Your data is secure and password protected on your computer.



Download the free Trial Version from
www.logistixsolutions.com

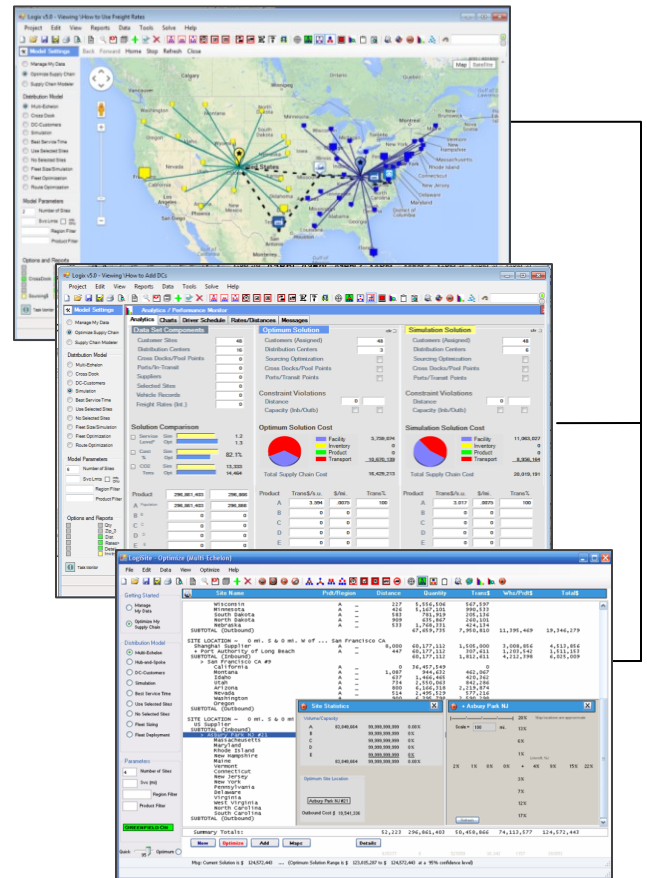
Your supply chain can mean the difference between a costly distribution network barely able to keep up with customers' demands or a smooth running operation that exceeds customer expectations and gives your company a competitive advantage.

Supply chain optimization and network modeling tools are the key to strategic savings. They can quickly make a comprehensive assessment of transportation, warehousing, inventory, and manufacturing costs and develop strategic models for optimizing the entire supply chain.

- **Supply Chain Optimization** - Number and location of distribution centers, manufacturing and distribution capacity planning and product flow optimization.
- **Sourcing and Product Flow Optimization** - Total landed cost, shipment consolidation, transport mode selection and rate savings.
- **Network Modeling** – Pooling, transport mode, port selection, cross dock, supplier direct optimization.

Companies now must routinely recalibrate and reoptimize their logistics operations to keep up with changing demand, new products, acquisitions and supply chain disruptions.

Most logistics problems are too complex to solve without the technology to ensure that all product flows, network design, transportation, inventory and warehousing costs and service implications are considered in the final solution.



“Logix provides remarkable insights and accurate solutions in minutes that helped us drive down inventory, transportation and warehousing costs and enabled us to improve customer service and fine-tune supply chain performance”.
Tom McKenna, Navesink Logistics, COO.

◆ Who should use Logix?

- Retailers concerned with total landed cost, off-shore sourcing, and the impact of lead time on inventory;
- Food and beverage companies optimizing fleet size and deployment, cross docking and transportation costs;
- Manufacturers and distributors optimizing the number, location and size of plants and distribution centers;
- Logistics service providers and consultants working with their clients to optimize asset utilization, service and cost;
- ◆ **Quick Return on Investment**
 - Operating costs reduced 5 to 35%,

◆ No up-front investment

- Subscription-based fee. Pay only for what you use.

◆ Better Planning

- Respond more quickly to bid proposals
- Optimum solutions and new insights in minutes.

◆ Affordable software solutions

- Streamline and optimize distribution operations on a continuous basis or as needed.

LOGISTIX SOLUTIONS – Supply Chain Solutions for Logistics Professionals

Logistix Solutions was established in 2006 as a software and consulting company to provide premier technology solutions and in-depth industry knowledge for logistics professionals. We offer award-winning, on-demand Supply Chain Planning and Execution applications at a revolutionary value for rapid ROI and benefit realization.

✚ Logix Supply Chain Optimization and Distribution Network Design – *Using the latest in distribution analysis and optimization technology, Logix ILP/NLP algorithms determine:*

- *Optimum number and location of distribution facilities cross dock, intermodal and warehouse facilities, transport modes and product flows that reduce cost and improve service requirements.*
- *Complex multi-tier distribution models and network solutions, critical supply and distribution lanes and inventory levels for optimum supply chain performance.*
- *Optimum cost and/or service as well as intangible or less quantifiable factors such as supply chain flexibility, sustainability, redundancy and ability to grow and accommodate change.*

✚ Logix Transportation Optimization – *planning and daily execution application taking into account all order and vehicle information, DOT regulations, and customer service level requirements, for:*

- *Vehicle routing and scheduling*
- *Shipment consolidation*
- *Carrier mode selection*
- *Backhaul optimization*
- *Mixed Pickup and Delivery*
- *One-Way or Round Trip Routing*

Logix uses powerful Integer Linear and Non-Linear Programming optimization algorithms to generate distribution networks, transport management solutions and vehicle routes and schedules resulting in least cost and/or best service results. Interfaces with Microsoft MapPoint and Google Maps allow for superior mapping, geocoding, and path finding capabilities.

Based on extensive development working with Fortune 1000 companies, Logistix Solutions provides full-featured, on-demand supply chain solutions and consulting services for retailers, manufacturers, third party logistics providers, consultants, food and beverage and other distributors to support strategic planning and logistics execution requirements.

For more information on the Logistix Solutions suite of products, visit our website at www.logistixsolutions.com or contact Logistix Solutions at 571.426.5951 or e-mail info@logistixsolutions.com.